

Diocese of St Mark the Evangelist

16th July 2016

†Martin Breytenbach



1

Mary or Martha?

MU Bishop's Teaching Day Eucharist

Luke 10:38-42

Mary

Represents

- ⊕ 1st commandment
Luke 10:27a
- ⊕ Love God
- ⊕ “Spiritual”
- ⊕ Faith



Martha

Represents

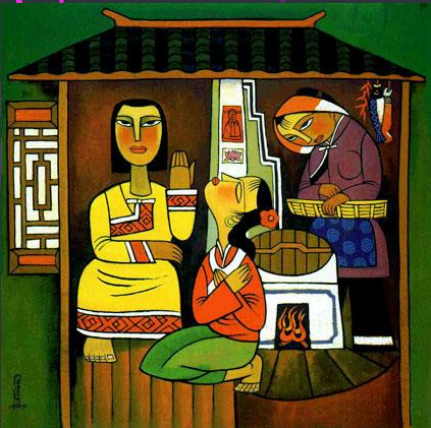
- ⊕ 2nd commandment
Luke 10:27b
- ⊕ Love neighbour
- ⊕ “Practical”
- ⊕ Works or action

Are you more like Mary, or Martha, or a mixture?

Mary

Strengths

- ✦ Prayer
- ✦ Bible study
- ✦ Worship
- ✦ The church
- ✦ Ministry



Martha

Strengths

- ✦ Development
- ✦ Acts of mercy
- ✦ Social justice
- ✦ The world
- ✦ Mission

Which is more important, or both? Why?

Mary

Dangers

- ✦ Escapism
- ✦ Self-indulgent
- ✦ Judging ⇒
- ✦ Lose touch with reality



Martha

Dangers

- ✦ Burn out
- ✦ Distracted
- ✦ ⇐ Judging
- ✦ Lose touch with God

Both are right and both are wrong!

Therefore, we need... Mary AND Martha

5



Mary AND Martha

James 2:17-18

- ✦ We are a **mixture** in ourselves
- ✦ The church needs **faith** and **action**
- ✦ It is a **creative tension**

God combines both!

- ✦ Jeremiah 1:11-12

Today we will apply this teaching to:

- 1) Making young disciples (Jeremiah 1:6-10)
- 2) Green Anglicans

