



Diocese of St Mark the Evangelist: Organizational Chart

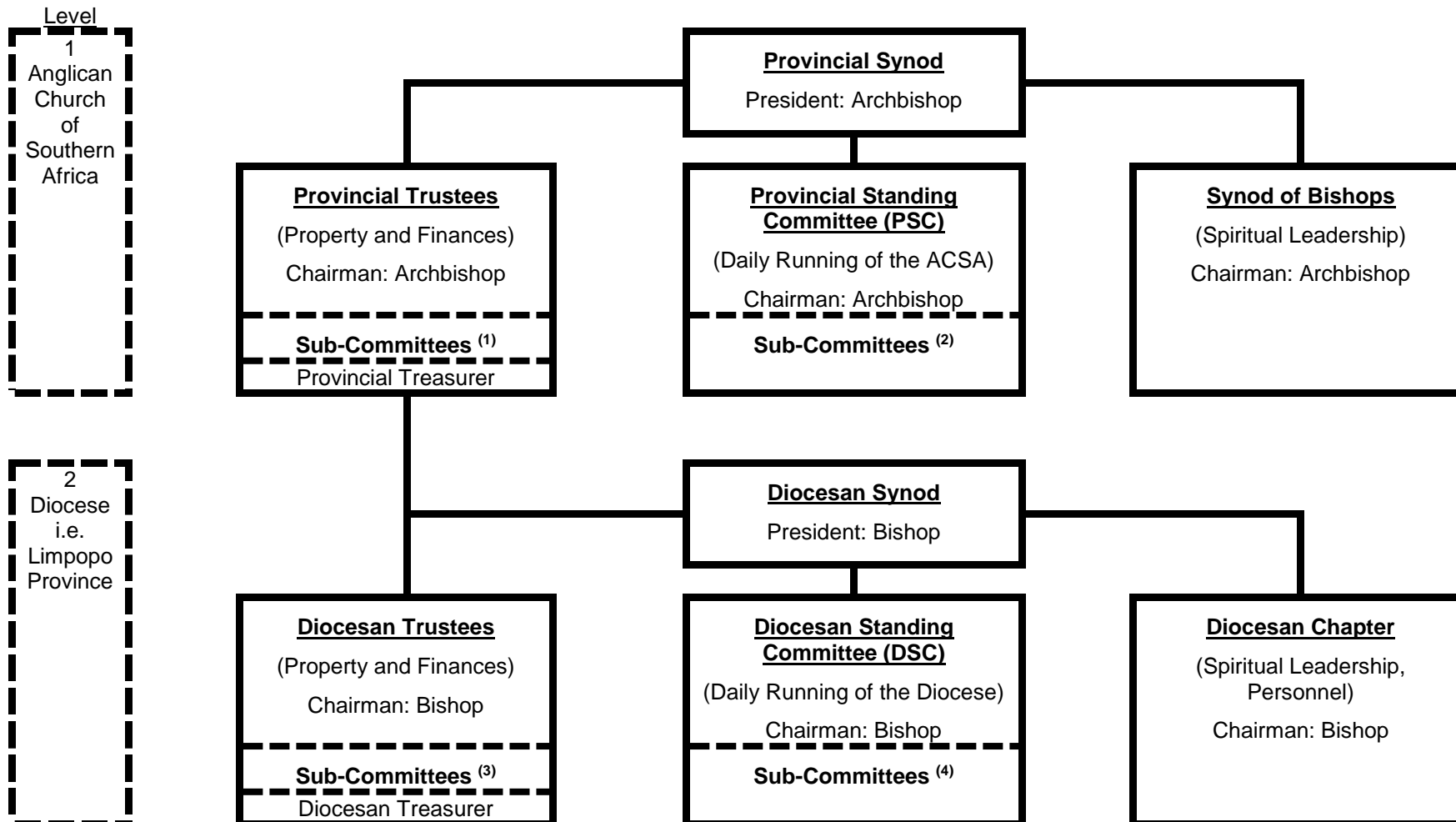
April 15



It is difficult to show everything at every level. But the chart below gives an idea of structures at various levels in the ACSA and Diocese, and how they relate to each other.

One of the interesting things about this structure is that it is both **hierarchical** (Bishop, Archdeacons, Rectors etc) and **democratic** (Synod, DSC, Archdeaconries, Parish Councils etc). These function in a creative tension.

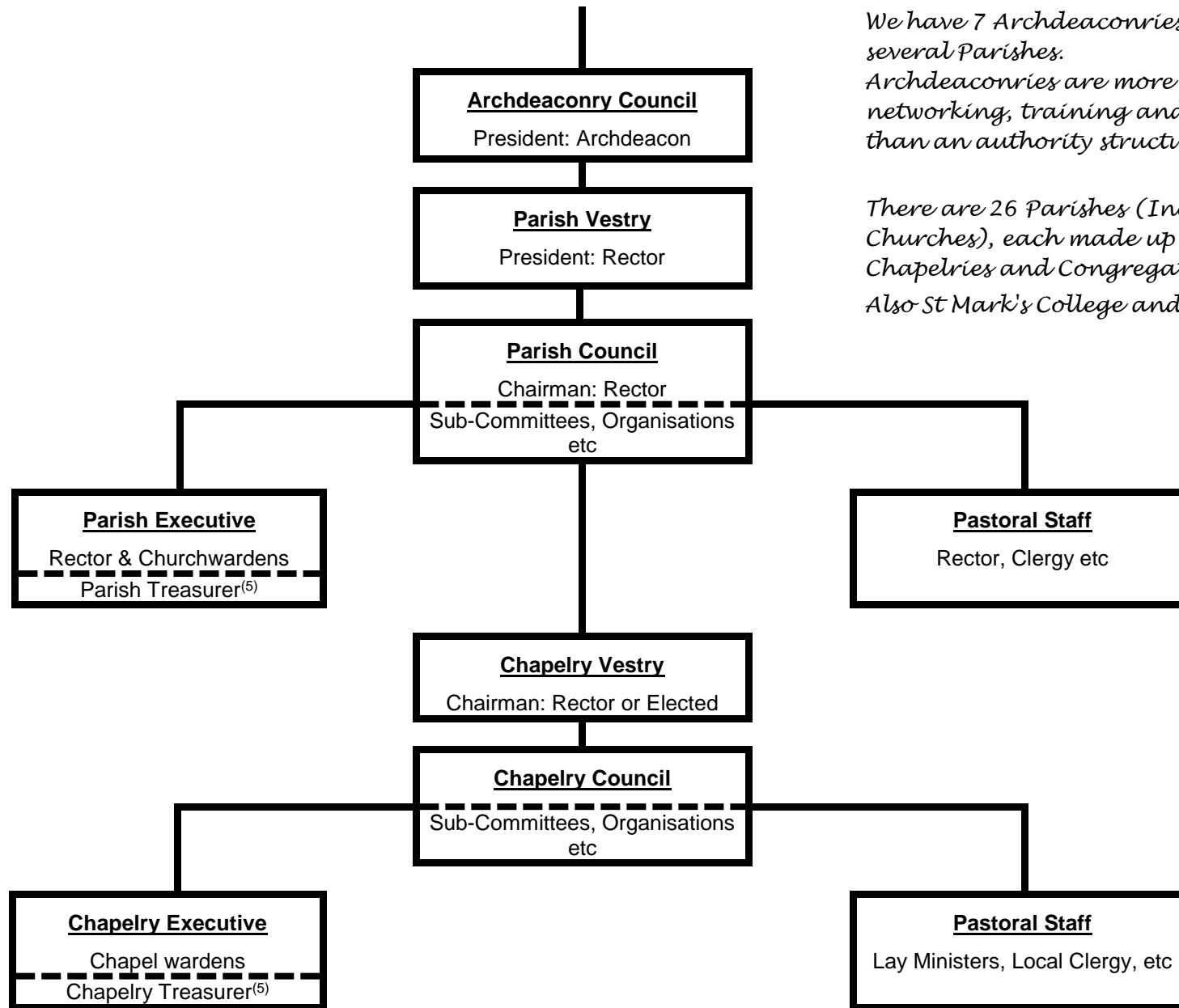
This basic structure is repeated in some of the Organisations like the Mothers' Union, Anglican Women's Fellowship, Youth, HIV & AIDS, Training for Ministries.



3
Regional

4
Area

5
Local



*We have 7 Archdeaconries, each made up of several Parishes.
Archdeaconries are more for fellowship, networking, training and coordination than an authority structure.*

*There are 26 Parishes (Including 2 United Churches), each made up of a number of Chapelries and Congregations.
Also St Mark's College and Ansoc (ASF)*

Notes:

- (1) Provincial Trustees are the Diocesan Bishops and a few representatives elected by Provincial Synod. They have several sub-committees to focus on particular aspects of their work, e.g.:
- ✦ Provincial Pension Fund
 - ✦ Management Committee
- (2) Provincial Standing Committee has Sub-Committees which represent the various Provincial Ministries of the ACSA, e.g.:
- ✦ Growing the Church
 - ✦ Provincial Organisations
 - ✦ Provincial Vision and Mission - and the 8 priorities
 - ✦ HOPE Africa
 - ✦ Anglican Youth
- (3) Diocesan Trustees have several sub-committees to oversee various aspects of their work, for example:
- ✦ Building Committee
 - ✦ Investment Committee
 - ✦ St Mark's College Council
 - ✦ Diocesan Finance Board - responsible for day-to-day financial management of the Diocese
- (4) Diocesan Standing Committee is organised into five Diocesan Departments, each of which is made up of Sub-Committees, Ministries or Organisations which concentrate on particular aspects of our mission and ministry. These are not watertight compartments, and some ministries could be put in several places.
- As new areas of mission and ministry open up, new Sub-Committees can be formed to oversee this work and report to DSC.
- | <u>Administration</u> | <u>Bishop's Office</u> | <u>Development</u> | <u>Growing the Church</u> | <u>Organisations</u> |
|---|------------------------------|-----------------------------|---|---------------------------------------|
| (Freda Chigumadzi) | (†Martin) | (Pat Lennox) | (Luke Pretorius) | (Solomon Makololo) |
| Chapter (Personnel & Spiritual Leadership) | Diocesan Development Network | Jane Furse Memorial Village | Training for Ministries | Mothers' Union |
| (Technically this area falls under Diocesan Trustees, but it is useful to put it here for communication purposes) | Communication | HIV & AIDS | • Worship Leaders | Anglican Women's Fellowship |
| Archdeacons' Fellowship | Guild of St Mark | Tlangelani | • Preachers | Anglican Students' Federation (Ansoc) |
| Ongoing Clergy Training | St Mark's College | Public Advocacy | • Pastoral Care | Anglican Choirs Fellowship |
| Finance Board | | | • Youth Pastors | Anglicans Ablaze |
| Leadership Team | Clergy Welfare | | • Evangelists | • Iviyo |
| | | | Growing the Youth | • New Wine |
| | | | Growing our Children (Anglicans Ablaze) | • SOMA |
- (5) Treasurers are appointed by the Parish or Chapelry Council and must report to the Council and Executive. The Treasurer does not have the right to vote (unless they also happen to be elected members)